

CosmoPAGE Bullet CBB

Cat. No. NU00103 500 ml

For Research Use Only

Features

- One-step staining in 15 minutes.
No need for washing before staining.
Clear stained image even without destaining.
- Contains no harmful methanol or acetic acid.

After 15 minutes of staining, you can detect bands without the need for destaining. However, for a clearer stained image, it is recommended to stain and destain for 60 minutes each. Refer to the reference data <Data 2> below for more information.

Protocol – Staining protocol for Mini-gel

1. Gently mix CosmoPAGE Bullet CBB by inverting the bottle a couple times before use.
2. Pour 20 mL of CosmoPAGE Bullet CBB into a container. Ensure that the amount used is sufficient to fully immerse the entire gel.
3. After completing electrophoresis, carefully transfer the gel to the container specified in step 2. Gently shake the container at room temperature to allow the gel to stain for 15 minutes.
*Washing before staining is not required.
4. Observe the stained image. For the observation, refer to the reference data under <Data 1>.
5. For a clearer stained image, stain for at least 60 minutes and then destain in purified water for at least 60 minutes. Refer to the reference data under <Data 2>.

Attention

- Wear protective equipment (such as safety goggles, rubber gloves, etc.) while handling CosmoPAGE Bullet CBB.
- CosmoPAGE Bullet CBB is an acidic dye solution. After use, discard it in accordance with the regulations in your region.

Storage

4 °C

Expiration

Expiration date is stated on the product label.

Technical Support

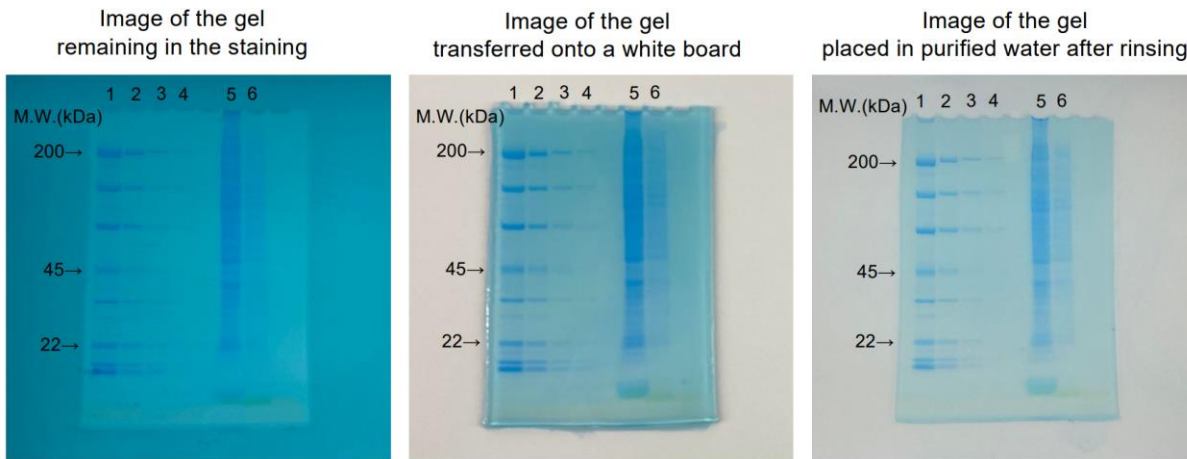
E-mail: info@nacalaiusa.com
Website: www.nacalaiusa.com

Rev. 10/2023

Reference Data

<Data 1> For observation of the stained image

After 15 minutes of staining, a stained image is visible even if the gel remains in the staining solution. However, for clearer observation, remove the gel from the staining solution and place it on a white board or gently rinse it with purified water.



Experimental conditions:

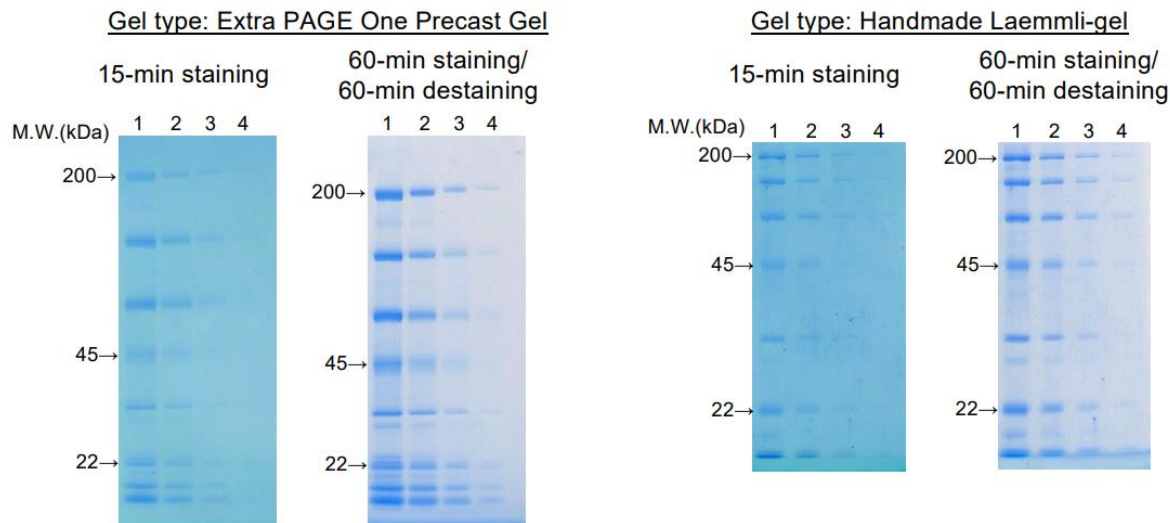
Sample: Protein Marker (10x) for SDS-PAGE prepared Lane 1: 3x, Lane 2: 1x, Lane 3: 1/3x, Lane 4: 1/10x, 2 μ l added.
HeLa cell lysate, Lane 5: 10 μ g, Lane 6: 2 μ g, added.

SDS-PAGE: Bullet PAGE Plus Precast Gel, 5-20%, 17 wells (Cat. No.: 21794-54). Run at 400V constant voltage for approx. 10 minutes.

Detection: Capture using a smartphone.

<Data 2> Comparison of stained images between '15-min staining' and '60-min destaining'

After 15 minutes of staining, stained bands are visible even without destaining. However, for clearer stained image, it is recommended to stain and destain for 60 minutes each.



Experimental conditions:

Sample: Protein Marker (10x) for SDS-PAGE prepared Lane 1: 3x, Lane 2: 1x, Lane 3: 1/3x, Lane 4: 1/10x, 2 μ l added.

SDS-PAGE: • Extra PAGE One Precast Gel, 5-20%, 13 wells (Cat. No.: 13063-74). Run at 300V constant voltage for approx. 30 minutes.

• Handmade Laemmli-gel, 12%, 12 wells. Run at 200V constant voltage for approx. 50 minutes.

Detection: Capture using a scanner.